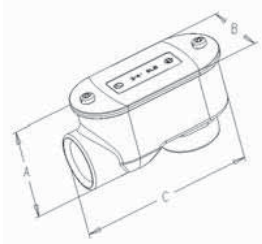


SERVICE ENTRANCE FITTINGS

SERVICE



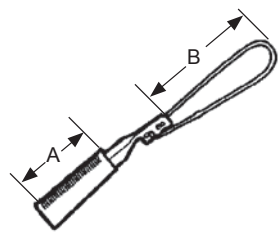
TRADE SIZE	HALEX PART #	CTN/CASE QTY	CTN/CASE WT (LBS)	DIMENSIONS (IN INCHES)		
				A	B	C
Service Entrance ELL				Aluminum		
1/2"	59505	10	2.5	1.625	1.406	3.281
3/4"	59507	5	1.5	1.953	1.703	3.813
1"	59510	3	1.3	2.125	1.563	4.313
1 1/4"	59512	2	1.68	2.563	2.438	5.563
1 1/2"	59515	2	2.36	2.594	2.625	6.250
2"	59520	1	1.92	3.125	3.078	6.750



ALL SIZES INCLUDE COVER AND GASKET.
APPLICATION: INDOORS OR OUTDOORS. Use to gain access to the interior of a raceway for wire pulling, inspections, and maintenance. Mounts flush against structure. **MATERIAL:** Copper-Free Die Cast Aluminum. **CERTIFICATIONS:** TO UL AND CSA REQUIREMENTS.



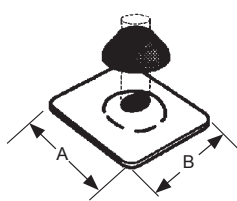
TRADE SIZE	HALEX PART #	CTN/CASE QTY	CTN/CASE WT (LBS)	DIMENSIONS (IN INCHES)	
				A	B
Wedge Clamp Connectors				Aluminum	
6-2	51061	4	1.4	3.00	5.45
4-1/0	51062	10	2.4	3.75	5.45
2/0-4/0	51063	10	2.4	3.75	5.45



APPLICATION: INDOORS OR OUTDOORS. Use to connect a triplex overhead service entrance cable to a mounting device or building. **MATERIAL:** Aluminum wedge and shell with stainless steel wire.



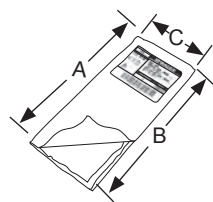
TRADE SIZE	HALEX PART #	CTN/CASE QTY	CTN/CASE WT (LBS)	DIMENSIONS (IN INCHES)	
				A	B
Roof Flashing				Steel	
1 1/4"-1 1/2"	60812	10	10.5	14.50	10.75
2"	60820	10	14	14.50	10.75
2 1/2"	60825	10	14	14.50	10.75



APPLICATION: OUTDOORS. Use to prevent water leaks in overhead services where conduit mast penetrates the roof surface. Slips over conduit mast and mounts to the roof. **MATERIAL:** Galvanized steel with Neoprene seal.



TRADE SIZE	HALEX PART #	CTN/CASE QTY	CTN/CASE WT (LBS)	DIMENSIONS (IN INCHES)		
				A	B	C
Duct Seals						
1 LB. SLUG	79910B	50	50	4.125	4.125	0.075
5 LB. SLUG	79950B	10	50	4.188	4.188	0.081



APPLICATION: INDOORS OR OUTDOORS. Use to seal around junction boxes, flashings, and service entrance locations. **FEATURES:** Service Temperature Range: -30°F - 100°F; Compound is pliable and noncorrosive to metals; Compound can be painted.



TRADE SIZE	HALEX PART #	CTN/CASE QTY	CTN/CASE WT (LBS)	DIMENSIONS (IN INCHES)		
				A	B	C
Electric Pane Washers				Steel		
1 1/4"x1/4"	96312	10 BAGS OF 4 PCS	1			

APPLICATION: INDOORS ONLY. Use in secure panel to a wall. **MATERIAL:** Steel. **FEATURES:** Round and takes a 1/4" bolt.